



MICHIGAN ECONOMIC  
DEVELOPMENT CORPORATION

## Ogemaw County, MI

Community Profile

TOTAL  
POPULATION  
**21,185**

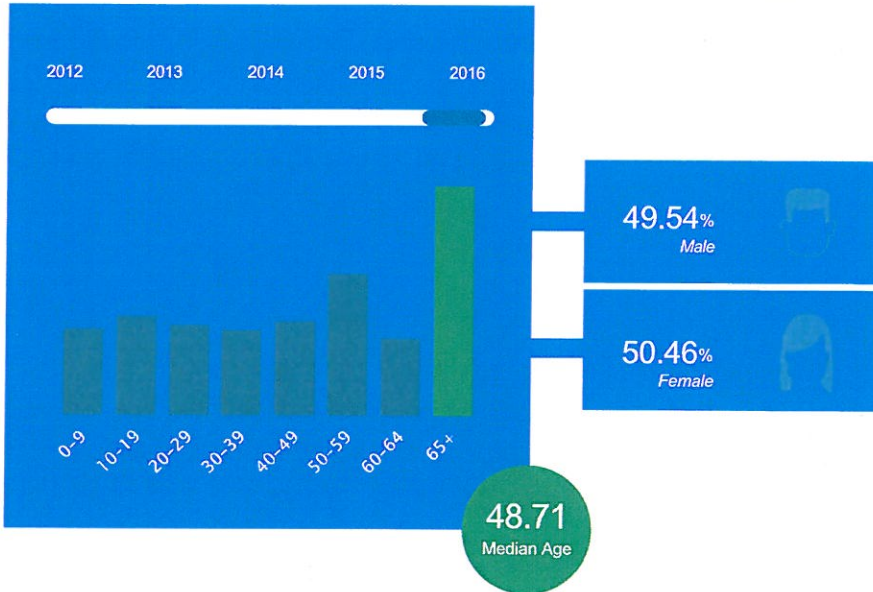
The total population of the County of Ogemaw County is 21,185. The median age is 48.71.



The population in Ogemaw County has decreased -2.37% since 2012.

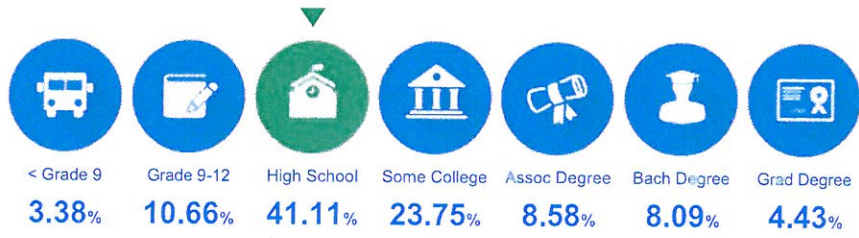


### Age Distribution



# EDUCATIONAL ATTAINMENT

The majority of the population in Ogemaw County has completed at least a high school degree.



21.10%  
of the population  
has a college degree.



offer Associate's Degree  
or Certificate



offer Bachelor's Degree  
or Higher

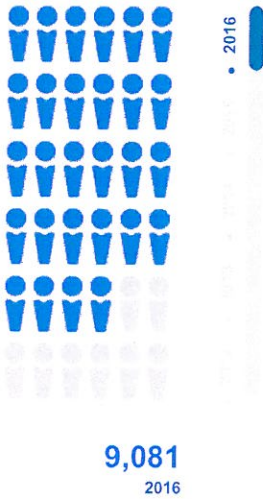
**LABOR  
FORCE  
8,699**

Ogemaw County has a labor force of 8,699 people, with a job growth rate of -2.81% since 2015, and an unemployment rate of 7.9%.

**JOB GROWTH**

**-2.81%**  
Since 2015

**TOTAL EMPLOYEES**



The work distribution of total employees in Ogemaw County is.



**7.9%** **-24.04%**  
Unemployment Rate Since 2015

**5 TOP TALENT**  
Where are the top jobs by occupation?



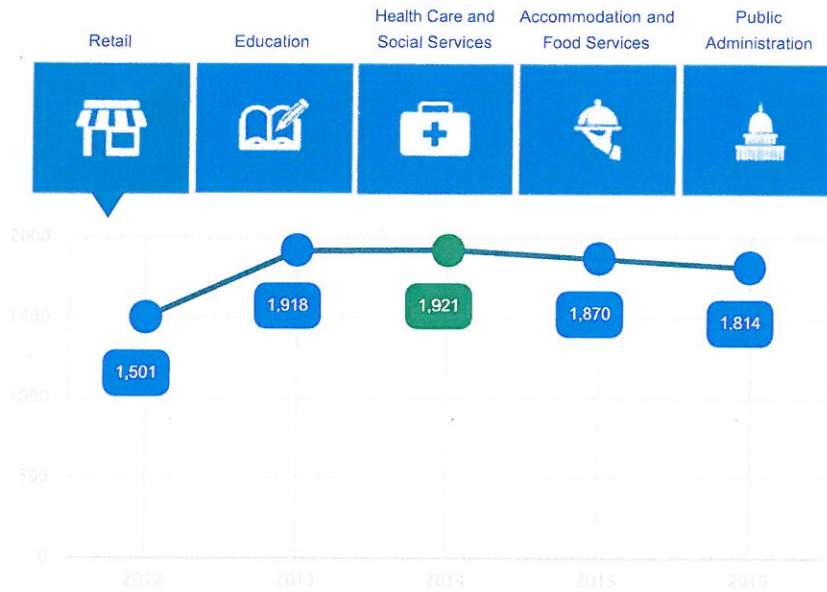
**TOTAL  
ESTABLISHMENTS  
1,149**

## BUSINESSES AND JOBS

Ogemaw County has a total of 1,149 businesses. In 2016, the leading industries were:

Retail, Education, Health Care and Social Services, Accommodation and Food Services, and Public Administration

Which are the top 5 industries by jobs?



How many employees do businesses in Ogemaw County have?

1-4 Employees	66.49%
5-9 Employees	19.76%
10-19 Employees	6.96%
20-49 Employees	4.18%
50-99 Employees	1.39%
100+ Employees	1.22%

# INCOME AND SPENDING

Workers in Ogemaw County earn a median yearly household income of \$37,230. 26.22% of the households earn more than the national average each year. Household expenditures average \$42,537 per year. The majority of earnings get spent on Shelter, Transportation, Food and Beverages, Health Care, and Utilities.

There are 330% more households who own their homes than there are renters.

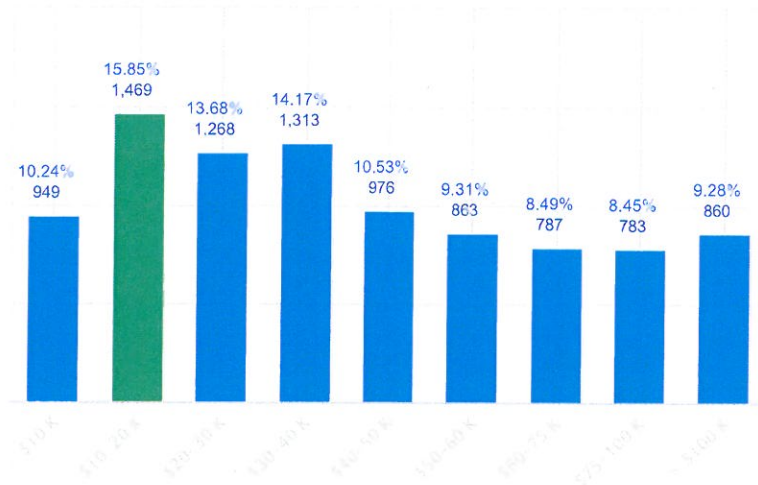


STATISTICS

**HOUSEHOLD  
INCOME**  
**\$37,230**

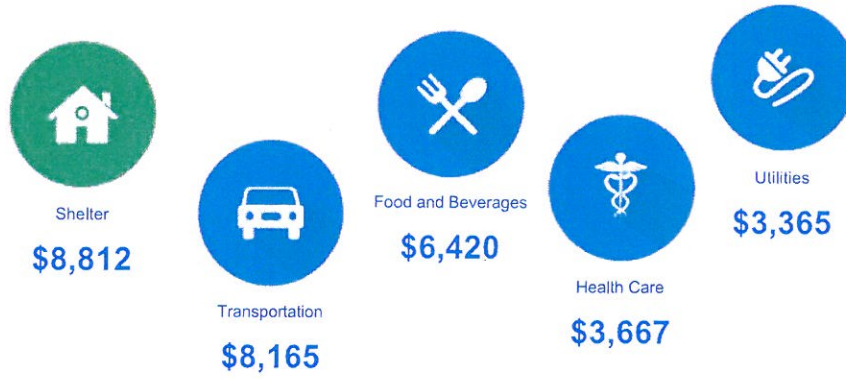
**28%** less than the state  
**34%** less than the nation

Income Distribution



## How do people spend much of their money?

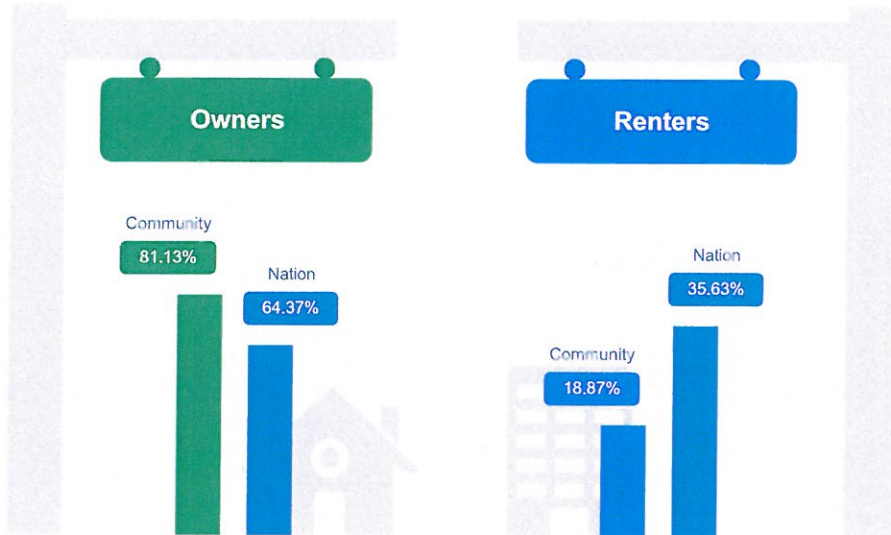
PER HOUSEHOLD



The average household expenditure in Ogemaw County is:

# \$42,537

## HOUSING




# TRANSPORTATION

---


Residents spend an average of 24 minutes commuting to work. Ogemaw County is served by 40 airports within 50 miles. Rail can be accessed within the community. Interstates can be accessed within the community.

---

**Interstate**  
In Community



**24min.**  
Commute Travel Time



**1**

Airports in Community

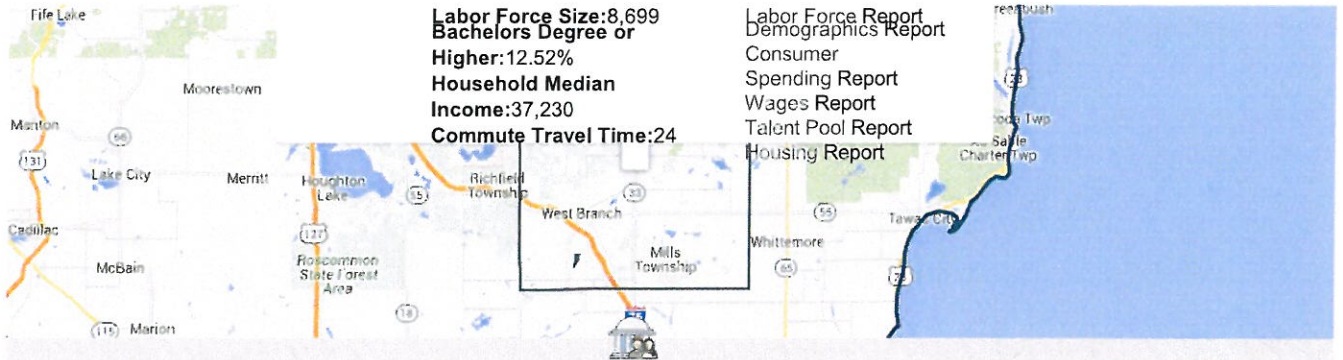
**40**

Airports in Community (+50 miles)



**Freight Rail**

In Community



**Labor Force Size: 8,699**  
**Bachelors Degree or Higher: 12.52%**  
**Household Median Income: 37,230**  
**Commute Travel Time: 24**

- Labor Force Report
- Demographics Report
- Consumer Spending Report
- Wages Report
- Talent Pool Report
- Housing Report

